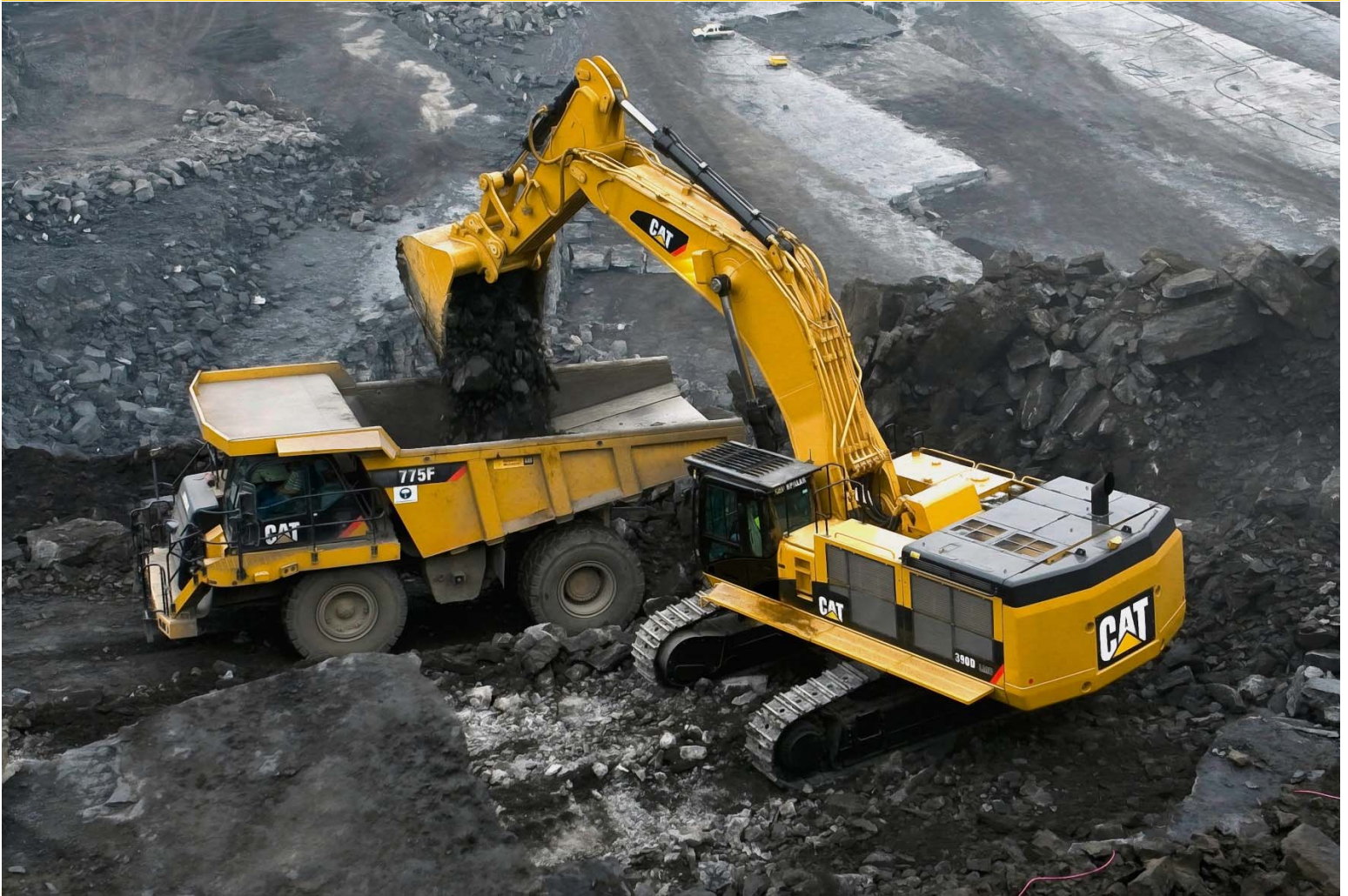


Remington valve

Severe Service Ball Valves for the Mining Industry



m-Series Valve

Engineered Solutions for Critical Service Applications.



Remington M Series Metal Seated Ball Valves

At Remington Valve we engineer and design valves for solids handling industries such as the Mining and Pulp and Paper Industries. We are committed to providing high-quality severe service ball valve solutions to improve efficiency and productivity for our customers.

M-Series Severe Service Valve (MBV)

The M-Series Valve offers customer flexibility and durability in a full port or regular port configuration. This Series is designed for heavy-duty service from slurry and corrosive environments to erosive applications.

Critical Service Design

Remington has decades of experience in critical service valve design. Each design is based on ASME B16.34 specifications.

Difference by Design

Flanged Seat Design – Remington’s flanged seat design offers field serviceability. Replace worn out trim in hours, not days or weeks with simple gasketed sealing surfaces. No more lapping of seats into end connects.

Ball and Seat Coating – Remington offers a multitude of coatings for slurry services including Chrome Carbide, Tungsten Carbide, Spray and Fuse, TiO₂ and other specialty coatings for our ball and seat sets. Application is performed by fully automated systems and provides a consistently dense coated surface.

Lapping makes the difference! Automated lapping machines lap the entire ball to a seat creating a mate lapped set, achieving Class VI shutoff.

Our seats are fully protected from the flow in the open position eliminating possible erosive effects of the material.

Our **Floating Ball Design** uses **Dual Springs** in the presence of solids to eliminate solid particles from entraining themselves in seat pockets. This allows the ball to rotate with out excessive torques caused by valve lock up.

O-Rings – Remington uses additional solid exclusion methods to keep our trim operating as expected. O-Rings are used, on the OD of the seats to further eliminate solid particle build up behind the seats. Reducing the chance of valve lock up from solids packing.

Full Automation Facilities

Remington provides full automation services for applications including: mining slurries, sodium solutions, hot gas, coal slurries and pump isolations.

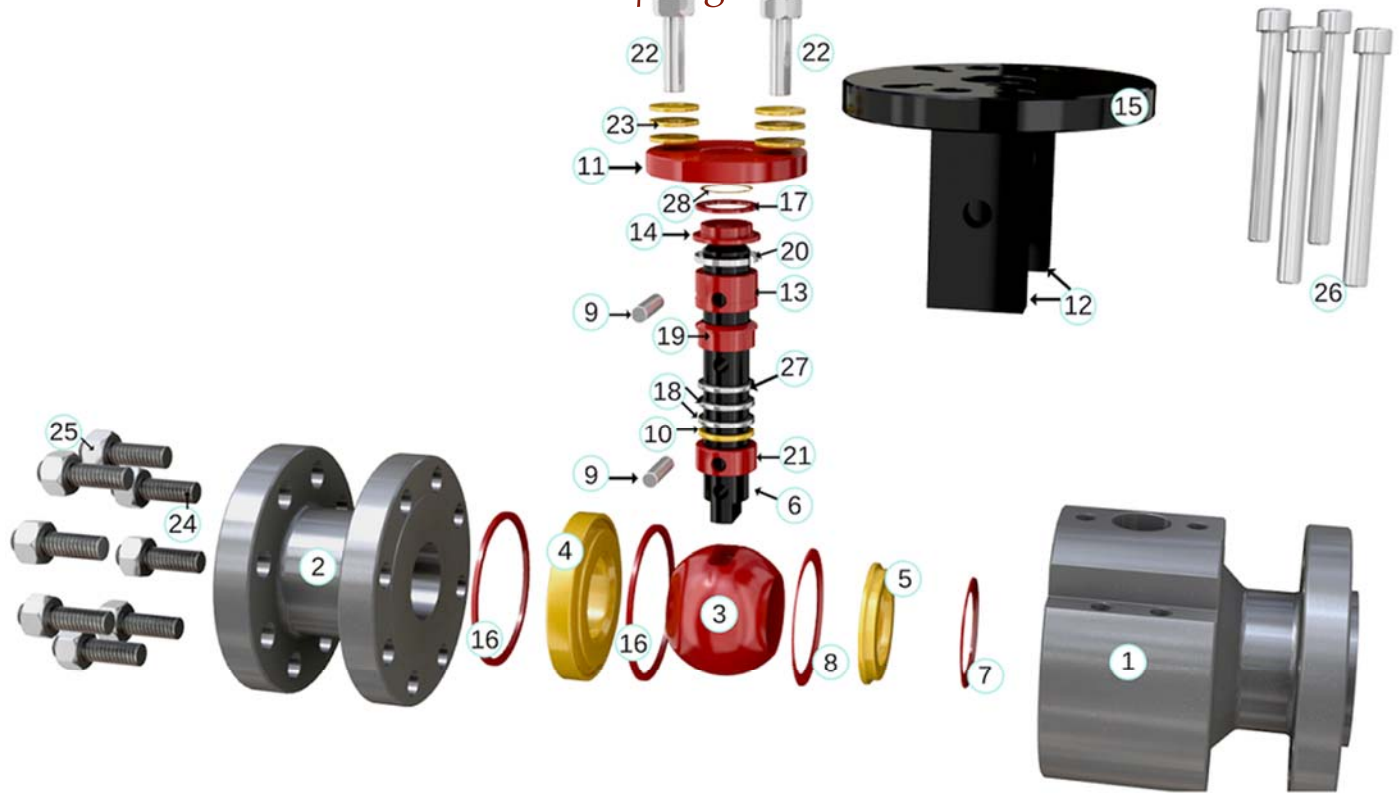
Remington offers ½ Inch and up 150# through 4500# ANSI Class.

VALVE SOLUTIONS FOR TODAY'S INDUSTRIAL NEEDS

- High Temperature Applications up to 1450° F
- High Pressure Applications
- Solids Handling
- Corrosive Environments
- Erosive Applications
- High Cycle
- Harsh Environments
- Inherently Fire Safe
- Emergency shutdown valves
- Blow-Out Proof Stem Design
- Custom Face to Face Design
- Studded Valves
- Cryogenic Valves
- Double block and bleed
- Fugitive Emissions
- Silicon Sands
- High Alloy Materials
- Low Temperature Carbon Steel
- High Temperature Stainless Steel

Resilience, Quality and Performance

m-Series Dual Spring Valve



A CLOSER LOOK

- | | |
|---------------------------|---------------------------|
| 1. BODY | 15. MOUNTING FLANGE |
| 2. END CONNECTION | 16. GASKETS BODY |
| 3. BALL | 17. SNAP RING |
| 4. DOWNSTREAM SEAT | 18. PACKING RINGS |
| 5. PUSH RING | 19. PACKING FOLLOWER |
| 6. STEM | 20. HOOPSTER RING |
| 7. INNER LOAD SPRING | 21. INNER COLLAR |
| 8. SOLIDS EXCLUDER SPRING | 22. STUD (GLAND) |
| 9. RETAINER PINS | 23. BELLVILLE SPRINGS |
| 10. PACKING BUSHING | 24. STUD (BODY) |
| 11. GLAND FLANGE | 25. NUT- HEAVY HEX (BODY) |
| 12. MOUNTING LEG | 26. SOCKET CAP SCREW |
| 13. OUTER COLLAR | 27. ANTI EXTRUSION RING |
| 14. UPPER BUSHING | 28. WASHER |

Custom Designs for the toughest applications.



FLOCONX[®]
— USA FLOW CONTROL COMPANY —

FLOCONX LLC
USA FLOW CONTROL COMPANY

SALES | INFORMATION
SALES@FLOCONX.COM
VENTAS@FLOCONX.COM

FLOW CONTROL, OUR PASSION.[®]

WWW.FLOCONX.COM

