

# Multiturn Bevel Gear Operators

DYNATORQUE valve accessories DTE series

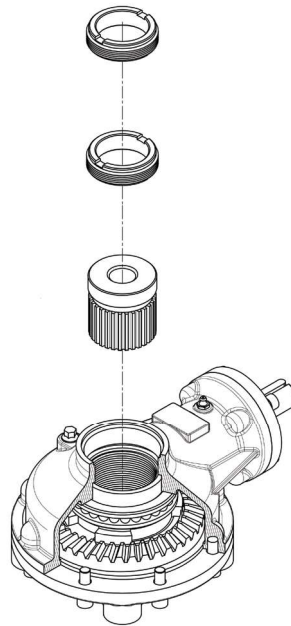
## APPLICATIONS

Manual valve operations

## ADVANTAGES

- ATEX and CE certification
- Standard ductile iron housing, carbon steel bevel gear, and carbon steel pinion gear
- Brass stem nut
- Ingress protection (IP) grade 65
- Temperature range: -4 to 248 degF [-20 to 120 degC]
- Gear operator that can be directly mounted on gate and globe valves under thrust loads
- Deep groove ball bearings for improved load carrying capability efficiency and operating cycles

The Cameron portfolio of DYNATORQUE\* valve accessories includes a wide range of ductile iron multiturn bevel gears to support manual operation across a broad range of valve sizes, with an optimized design to ensure high-quality and robust performance.



Multiturn bevel gear operator configuration.



BH-V series.



BH-V-1S series.

Bevel Gear Model Number	Recommended Handwheel Size, in [mm]	Max. Thrust, lbf [kN]	Max. Output Torque, ft.lbf [N.m]	Gear Ratio	Mechanical Advantage, ±10%	Max. Valve Stem Size, in [mm]
BH-V0	16 [400]	28,550 [127]	406 [550]	3	2.6	1.26 [32]
BH-V1	18 [450]	31,698 [141]	664 [900]	3.6	3.1	1.50 [38]
BH-V2	20 [500]	42,714 [190]	1,106 [1,500]	4.2	3.6	1.89 [48]
BH-V3	24 [600]	60,248 [268]	1,475 [2,000]	4.5	3.8	2.05 [52]
BH-V35	26 [650]	69,241 [308]	2,065 [2,800]	5.2	4.4	2.76 [70]
BH-V35-1S	24 [600]	69,241 [308]	3,319 [4,500]	23	14.1	2.76 [70]

More sizes are available on request.



**FLOCONX**<sup>™</sup>  
— USA FLOW CONTROL COMPANY —

**FLOCONX LLC**  
**USA FLOW CONTROL COMPANY**

SALES | INFORMATION  
SALES@FLOCONX.COM  
VENTAS@FLOCONX.COM

FLOW CONTROL, OUR PASSION.™

WWW.FLOCONX.COM